



Crane 120

... the Goliath among our light cranes!



- ***Highest ABC-Light-Crane up to 12 m (39.3 ft) length***
- ***Extremely light and stable square section***
- ***Packed length only 1,80 m (5.91 ft)***
- ***Set-up in less than 20 minutes***
- ***A perfect allrounder***

www.abc-products.de

e-mail: info@abc-products.de

wherever you go...

ABC
PRODUCTS 

Crane 120 – higher than any other light crane

The Crane 120 rounds up the spectrum of the light cranes. It essentially differs by its expandability on up to 12 m [39.4 ft] arm length. With a specially engineered square tube construction the crane is extremely stable and easy to assemble.

The crane is designed to easily support an ABC Remote-Head (optionally available) with a professional camera mounted on it permitting extremely smooth shots in studio or in the open.

Modular-System

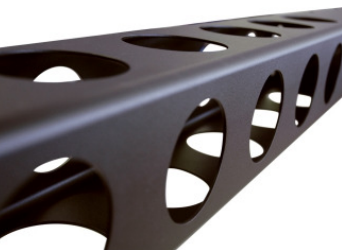
Its extendable system allows you to select lengths from 4,5 m [14.8 ft] to 12 m [39.4 ft]. Transport dimensions with a length of 1,80 m [6 ft] are very compact. Mounting the crane only takes 20 minutes (by one person!).

ABC-Light Cranes - worldwide in use

Filming at a big sport event (i.e. Soccer World Cup), in the Himalayas, on the roof of a skyscraper in New York or on a South Sea Island beach, wherever the use of a camera crane is necessary: the ABC-Light Cranes are easy to transport, uncomplicated, within minutes ready to use and enable fantastic shooting wherever you are.



Crane-head with (optional) Remote-Head



square-type tube



Crane support stand incl. spirit-level

	max. camera weight imperial/metric	Front crane arm length imperial/metric	Back crane arm length imperial/metric	Total length imperial/metric
Crane 120	55.12 lb / [25 kg]			
12 m-version		33.9 ft / [10,33 m]	5,3 ft / [1,62 m]	39.2 ft / [11,95 m]
10,5 m-version		29 ft / [8,83 m]	5,3 ft / [1,62 m]	34.3 ft / [10,45 m]
9 m-version		24 ft / [7,33 m]	5,3 ft / [1,62 m]	29.4 ft / [8,95 m]
Large version		19.1 ft / [5,83 m]	5,3 ft / [1,62 m]	24.4 ft / [7,45 m]
Medium version		14.2 ft / [4,33 m]	5,3 ft / [1,62 m]	19.5 ft / [5,95 m]
Short version		9.3 ft / [2,83 m]	5,3 ft / [1,62 m]	14.6 ft / [4,45 m]

Liable to technical changes without notice.

Optional accessories:

Tripod: Bullstand 120 (as far as 9m-version)

Counterweights

Dollies: standard base dolly CD 5 with extension or the wide base dolly CD 6

Remote-Heads: Remote Head Pelé XL 35 or Remote Head Alex

About ABC ...

ABC Products has been active in studying solutions for the moving camera technique for many years. Consistent lightweight construction and high functionality as well as durability are the main characteristics of our developments.

Some of our products include:

Camera balance systems (HandyMan) hand-operated or body supported for different camera weights. **Light Cranes** with different lengths, from the consumer up to the professional system with **remote Head**. **Light Dolly** with track system and **ABC Spirit Light**, a light system in a protective case.

ABC Products also carries out special solutions besides manufacturing an extensive list of accessories which all have one in common:

Filming with the moving camera!